

# The Niro Hybrid & EV



Movement that inspires



# The Kia Niro.

There is a lot more to a step than we give credit for.  
A single step can move the world or it can start a movement.  
A small choice can create a better future for everyone.





# Another step toward a more sustainable future.

At Kia, we're moving towards sustainable mobility through our collective global footsteps. From design innovation that saves energy. To innovative materials that are inspired by nature. We create new technologies that have less impact on our surroundings.





## A bold new crossover.

Fully redesigned from the ground up. Modern, simple lines showcase a unique design that extends from its headlamps to its rear pillar boomerang lights.







**BIO artificial leather seats (SX only)**

A strong yet soft material that closely resembles leather but is made from eucalyptus trees.



**Innovative interior design built with materials inspired by nature.**

From its bold diagonal movement flowing from the driver seat all the way to the passenger door. To its interior sustainable materials that show Kia's commitment toward sustainability.

The headliner material is 56% recycled plastic. The cargo screen is knit fabric and 70% recycled plastic. We use BTX-free (benzene, toluene and xylene) paint so your new Niro will be free from harmful chemical and smell.







# Confident, adaptive performance.

Niro is not only fun to drive, but also sustainable. You can choose to have more acceleration, or maximize your charge range or fuel efficiency. Sensors and navigation data help you stay on the right side of speed laws and the laws of physics.



With its aerodynamic body design, the Niro is focused on improving fuel efficiency. Its hybrid mode reduces CO<sup>2</sup> emissions everywhere you go. Sustainability is as simple as getting in and go. It's an effortless way to help to protect the environment.



**C-pillar aero duct**  
The C-pillar design highlights the profile of the car. To prevent static pressure, the aero-pillar has an opening to let airflow through.



**Shift By Wire (SBW) (SX only)**  
Dial-type SBW provides superb operational convenience and safety in terms of console and indoor space utilization, as well as automatic P-Mode engaging logic.

**Drive Mode Select (DMS)**  
The Niro can adjust to the way you Switch to Sport mode for more zip, or to Eco mode for lessened fuel consumption.



# Individual attention for everyone on board.

The new seat design is stylish and comfortable. Firmness helps prevent fatigue. Ample headroom and legroom add to the feeling of comfort.



## Passenger relaxation comfort seats

These front seats are slim and sturdy. They offer uncommon adjustability and firm support. Bolsters and contours help reduce fatigue.



## 2nd-row seat comfort

Slim seat design means more legroom for rear passengers.

# Connectivity and simplicity.

The instrument cluster is simply laid out. Controls are easy to reach and operate. Information appears in smarter, more efficient ways. Devices connect, charge, and sync effortlessly.



## Panoramic curved display

A curved, unified HD display combines driving functions and the center infotainment and navigation system in one manageable frame. Simple graphics and touch commands give the driver top priority.



## USB charger on seatbacks

Rear seat passengers will find USB ports in the seatbacks ahead of them, so they can charge their devices whenever they want.



## Wireless charging tray (SX only)

The charging pad in the dash, in front of the center console, lets you quickly charge compatible portable phones, wirelessly.



## Infotainment/climate switchable controller

Infotainment and climate share the same LCD keyboard. Press the fan/arrow button to switch between climate and infotainment controls.



The Niro offers a bright, relaxing experience to everyone in the front and rear seats. A wide sunroof lets in light and fresh air. Sensors keep the driver aware of any rear passengers still onboard.

Rear seats can be folded down to let the rear cargo space extend into the cabin.



**Rear Occupant Alert (ROA)**

To make sure no one is left alone, ROA warns you of any rear occupants when you stop and prepare to exit.



**Headrest hanger / Sunroof (SX only)**

The backs of the front headrests include built-in, shape-preserving coat hangers. The roomy dimensions of the Niro seem to expand with the wide tilt-sliding sunroof. It takes full advantage of the roof geometry, offering a broader opening for light and breezes to get inside.



**Smart power tailgate (SX only)**

Drivers can program a desired stopping height for the tailgate with their digital key. Stand behind the parked Niro, with Open selected, and the tailgate will open automatically.



# Driving technology that protects.

Observing, sensing, and stepping in whenever you need assistance: Kia's DRIVE WISE applies the latest Advanced Driver Assistance System (ADAS) technologies to help keep you alert, safe and in control. Ensuring the ultimate in occupant and pedestrian safety.



## Highway Driving Assist (HDA) (SX only)

Highway Driving Assist helps maintain a set distance and speed from the vehicle ahead when driving on a highway and helps center the vehicle in the lane while driving, even through a curve.



## Blind-Spot Collision-Avoidance Assist (BCA) (SX only)

When operating the turn signal switch to change lanes, BCA provides a warning if there is a risk of collision with a rear side vehicle. If exiting a parallel parking spot and there is a risk of collision with a rear side vehicle, it automatically assists with emergency braking.



## Forward Collision-Avoidance Assist (FCA)

Using a front view camera and front radar, FCA can detect a vehicle, a pedestrian, or a cyclist ahead, and warn you, or even brake automatically. It will also brake automatically if it senses the risk of an oncoming vehicle from left or right at an intersection ahead.



## Smart Cruise Control (SCC) (SX only)

Smart Cruise Control helps maintain distance from the vehicle ahead and drive at a speed set by the driver. The Niro stops automatically if the car in front comes to a halt, and starts automatically if the vehicle ahead resumes accelerating within a set time.



One can never be too cautious.

ADAS technology offers an extra pair of eyes to help you in any situation. When you are on the move, while you are parking, when you are backing out, and even when you are stepping out of your vehicle. Feel protected.



**Rear View Monitor (RVM)**

The Rear View Monitor displays video of the situation behind the vehicle for safe parking.





# Choose your style.

Select your favorite combination of unique colors and textures to give your Niro its own character.



Full LED headlamps (SX)



Projection headlamps with LED DRLs (EX)



LED foglamps (SX)



LED turn signal lamps (SX)



Bulb turn signal lamps (EX)



Electronic Parking Brake (EPB)



10.25-inch display audio



4.2" Supervision Cluster (EX only)



Ventilated and heated front seats (SX only)



Integrated Memory System (IMS) (SX only)



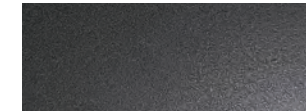
Metal pedals (SX only)

## Upholstery

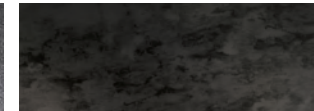


Charcoal

## Crash Pad Garnish



Metal black (EX)

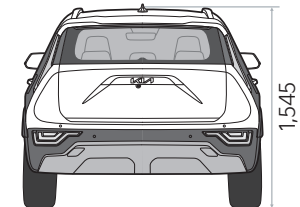
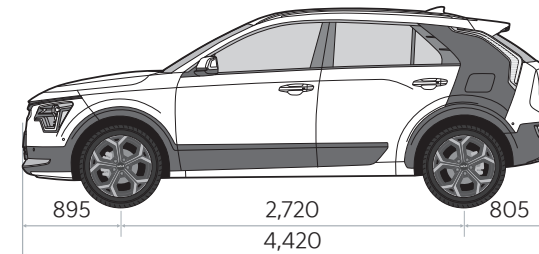
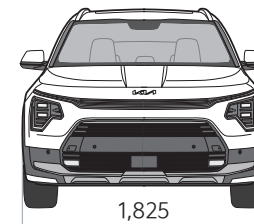


Metal cloud (SX)

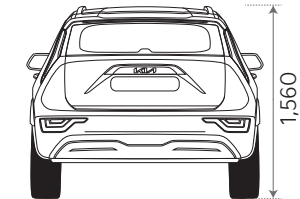
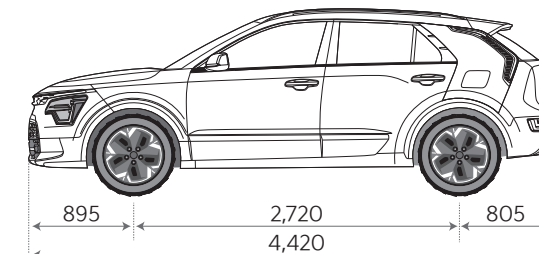
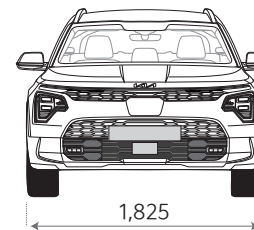
## Dimensions (mm)

	Niro Hybrid	Niro EV
Headroom (1st/2nd row)	1,028 / 1,005	1,028 / 967
Legroom (1st/2nd row)	1,053 / 1,011	1,053 / 938
Shoulder room (1st/2nd row)	1,429 / 1,407	1,429 / 1,407
Hip room (1st/2nd row)	1,353 / 1,347	1,353 / 1,347
Minimum ground clearance	160	150

## Niro Hybrid



## Niro EV





## Choose your exterior.

### Exterior Body Colors



Snow White Pearl (SWP)



Steel Gray (KLG)



Interstellar Gray (AGT)



Aurora Black Pearl (ABP)



Mineral Blue (M4B)



Cityscape Green (CGE)



Orange Delight (DRG)



Runway Red (CR5)

### Wheels



Niro EV 17" Alloy wheel

### Wheels



Niro Hybrid 16" Alloy wheel

### Technical Data

Fuel Consumption (l/100km):	4.0
CO2 Emission (g/km):	93
VES Banding:	A2

# Cycle & Carriage Aftersales Service keeps your car in its prime.

We care for you the same way we care for our family. Experience the Cycle & Carriage Kia Service spirit as we welcome you at our Kia Authorised Service Centres.

With more than a century in the automotive industry, we can assure you that you will enjoy the most comprehensive customer support and exceptional service experience by well-trained professionals, using state-of-the-art technologies, diagnostic tools and genuine parts to keep your Kia vehicle running in peak condition. All Kia genuine parts come with 2 years or 40,000km (whichever comes first) warranty.

This is our commitment to you.



## Industry-leading warranty.

We are confident of the quality and durability of every Kia vehicle, having undergone stringent pre-delivery processes and checks before being delivered in pristine condition. We are so confident that your new Kia car will enjoy a 5-year unlimited mileage warranty and a 10-year engine warranty.

From the date of registration, your new Kia car is covered against defects in materials and workmanship for a period of 5 years of factory unlimited mileage.

On top of that, starting from 1 June 2014, your Kia car will come with a 10-year engine warranty, subject to a maximum mileage of 200,000km or 10 years, whichever is earlier. This engine warranty from Cycle & Carriage will take effect immediately after the expiry of the manufacturer's.



**10**  
YEAR  
ENGINE  
WARRANTY

**5**  
YEAR  
UNLIMITED  
MILEAGE WARRANTY

**Kia Service Centres**  
241 Alexandra Road  
209 Pandan Gardens  
330 Ubi Road 3  
600 Sin Ming Avenue

**Tel: 6866 1666**



## Movement that inspires

At Kia, we believe movement inspires ideas. Great ideas come to you when you're on the move. Whether you're walking, traveling on a train or driving. It's why we create the spaces and the time you need to bring ideas to life.

※ All information, illustrations and specifications are accurate at the time of printing and are subject to change without notice. The models and specifications shown in this brochure may vary from those available in your market. Contact your local Kia dealer for current information and full warranty details including terms and conditions. Printed in September 2024.



[Kia.sg](http://Kia.sg) / [Kia.com](http://Kia.com)



[facebook.com/kia.sg](https://facebook.com/kia.sg)



[instagram.com/kia\\_sg](https://instagram.com/kia_sg)



[www.youtube.com/KiaSingapore](https://www.youtube.com/KiaSingapore)



Movement that inspires

Cycle & Carriage Kia Pte Ltd  
Kia Showroom:  
239 Alexandra Road S(159930)

Tel: 6866 1666



**CYCLE & CARRIAGE**  
Exceptional Journeys



# The Niro Hybrid



Movement that inspires



## Kia Niro Hybrid Features



Blind-Spot Collision-Avoidance Assist (SX only)



10.25" Panoramic curved display



Smart Cruise Control (SX only)

## Technical Data

## 1.6ℓ Hybrid Crossover

Displacement (cc):	1,580	Overall Length (mm):	4,420
Engine type:	Smartstream 1.6	Overall Width (mm):	1,825
Max Power (kW):	96 (126bhp)	Overall Height (mm):	1,545
Max Torque (Nm):	265	Wheelbase (mm):	2,720
0 - 100km/h (sec):	10.4	Minimum Turning Radius (m):	5.3
Top Speed (km/h):	165	Fuel tank (ℓ):	42
Fuel Consumption (ℓ/100km):	4.0	Tyre Size:	205/60R16
CO <sub>2</sub> Emission (g/km):	93	VES Banding:	A2



**J.D. Power**  
Highest Ranked Mass Market  
Brand in Initial Quality Study  
6 Years in a Row





# Specifications

Exterior	EX	SX
16" Alloy Rims with Aerodynamic Cover	●	●
LED Daytime Running Lights	●	●
Aeroblade Wipers	●	●
LED Rear Combination Lamps	●	●
Rear Diffuser	●	●
Rear Spoiler	●	●
Shark Fin Antenna	●	●
Electronic Folding Mirrors with LED Side Repeaters	●	●
Front Fog Lamps	-	●
Full LED Headlamps	-	●
Sunroof	-	●
Roof Rack	-	●
Interior		
6-speaker System	●	●
Tilt and Telescopic Steering Wheel	●	●
Dual-zone Automatic Climate Control	●	●
10.25" Touchscreen Infotainment System with Apple CarPlay and Android Auto Connectivity	●	●
10.25" Digital Supervision Cluster	-	●
Door Scuff Plates	-	●
Ambient Lighting	-	●
Aluminium Sport Pedals	-	●
Chopped Carbon Door Trim	-	●
Comfort and Convenience		
Acoustic Film Windshield	●	●
Tyre Pressure Monitoring System (TPMS)	●	●
Integrated Steering Wheel Control (Bluetooth Hands-free and Audio Remote Control)	●	●
Auto Up-down Window	●	●
60:40 Split Folding Rear Seats	●	●
Drive Mode Select System (Eco, Sport)	●	●
Auto Defogger System	●	●
Auto Headlamps Control	●	●
Button Start/Stop with Keyless Entry System	●	●
Auto Rain Sensor	●	●
Shift-By-Wire	-	●
2nd Row Aircon	-	●
Heated and Ventilated Front Seats	-	●
Wireless Smartphone Charger	-	●
Electronically Adjustable Driver's Seat with 2 Memory Settings	-	●
Smart Power Tailgate	-	●
Safety and Security		
Advanced 8-airbag System	●	●
Lane Keeping Assist	●	●
Forward Collision-Avoidance Assist (FCA)	●	●
Vehicle Stability Management (VSM)	●	●
Electronic Stability Control (ESC)	●	●
Anti-lock Braking System (ABS)	●	●
Brake-force Assist System (BAS)	●	●
Hill-start Assist Control (HAC)	●	●
Emergency Stop Signal (ESS)	●	●
LED High Mounted Stop Lamp	●	●
Rear View Camera with Dynamic Guideline	●	●
ISOFIX	●	●
3-point Seatbelts	●	●
Seatbelt Reminder	●	●
Front and Rear Parking Alert System	-	●
Blind-Spot Collision-Avoidance Assist (BCA)	-	●
Rear Cross-Traffic Collision-Avoidance Assist (RCCA)	-	●
Smart Cruise Control	-	●
Safe Exit Assist	-	●



facebook.com/kia\_sg



instagram.com/kia\_sg

Cycle & Carriage Kia Pte Ltd  
 Kia Showroom: 239 Alexandra Road S(159930)  
 Tel: 6866 1666  
 www.kia.sg / www.kia.com

